



February 2024

Emergency Preparation for Floods & Storms

Since Black Saturday, STAG's Emergency sub-committee has developed a number of documents to assist the community to prepare for emergencies. While much of our focus has been on bushfires, we have also produced a General Emergency Information document which covers floods, electrical storms, dangers that may be experienced on Tableland roads and some basic First Aid information. All of our documents can be viewed on the community website strathbogie.org.

Recent experience has demonstrated that, in any sort of emergency (and sometimes even when there doesn't appear to be an emergency), we can be without power, internet, phone coverage, etc. The following information is an extract from our General Emergency document and will provide information in hard copy that you can keep on hand for easy reference.

In any emergency it is essential that you remain informed by having a radio and back up batteries.

FLOODS

Warnings will be issued by the Bureau of Meteorology if there is likelihood of a potential flood threat from a developing weather situation or if specific catchments or rivers are about to flood. However, Flash Flooding can occur due to heavy rain and result in a very rapid rise of water over a short period of time.

There may be little or no warning.

PREPARING FOR FLOOD

Familiarise yourself with areas on the Tableland that may be affected by flood such as property adjacent to creeks and low lying areas on roads where water may accumulate. Be aware of the possible need to find alternate routes on or off the Tableland – on occasion a tree has closed the Euroa/Strathbogie Road for several hours while, at the same time, the Euroa/Merton Road was closed due to flooding.

DO NOT DRIVE THROUGH FLOOD WATERS

Many of you will have put together an emergency kit for the bushfire season; you may wish to expand this to cover other emergencies, ie ensure you have waterproof containers to protect your valuables, etc.

IF FLOOD IS IMMINENT

- ☐ listen to your local radio/TV for further information
- ☐ communicate with your neighbours
- ☐ stack furniture and possessions above likely flood level, on beds, in roof (with electrical items on top) *continues page 3*

What's On

Road rehabilitation closures: Spring Creek Rd from **Jan 22**, Creek Junction Rd from **Feb 2** p9

Feb 3 Horses for Healing p8

Feb 10 Murrnong Permaculture p16

Feb 23 Pitch my Project closes

Every Last Saturday of the month - Strathbogie Golf Club Community Meals.

Every First Monday of the month - Strathbogie Tableland History Group meets 1.30pm, Strathbogie Memorial Hall.

strathbogiehistory@gmail.com

Every Second Wednesday of the month - Strathbogie Memorial Hall Committee meets 7pm in the Soldiers Room. Enq Mary Wynne 0419 592 211

Every Wednesday - Material Girls - usual times 10am - Rec Ground - BYO lunch. Newcomers welcome Ph: Jill Smith 5790 5159.

Every Wednesday - 7.30pm Strathbogie Singing Group - St Andrews Church Ph: Di Mackrell 5790 5241

Every Second and Fourth Sunday Church service at St Andrews Church - Strathbogie 11.00am

Every First Wednesday of the month - 1.30pm Strathbogie Garden Group. Co-ordinator Kay Righetti 0418 171 439

Every Fourth Saturday of the month - Australian Plants Society Group meeting Pete 0402 882 959

Every Third Sunday 10am STAG Committee at the Hall. All welcome.

Tennis at the Recreation Reserve. Enq about social tennis: Secretary Mayra Walsh 0423 475 564

Euroa Cinema

Two tickets to Greece M Feb 2 8pm, Feb 3 4pm
One life PG Feb 3 8pm, Feb 4 4pm
Next goal wins PG Feb 10 8pm, Feb 11 4pm
Ferrari MA 15+ Feb 17 8pm, Feb 18 4pm
Community Choice Movie Feb 24 8pm, Feb 25 4pm. Vote at 1800 065 993 (BH) or <https://share.strathbogie.vic.gov.au>
Tix \$12 at box office or www.strathbogie.vic.gov.au

Do you need a Justice of the Peace?

Chris Thomson
 'Aberdeen'
 5790 5340

Boho South Hall

Available for hire
 Bookings contact:
 Christine Ellis
 0419 908 522 or
info@bohossouthhall.org



Swanpool CINEMA

Life with me MA 15+ Feb 3 & 4 6pm
 EO MA 15+ Feb 3 & 4 8.15pm
 The crime is mine M Feb 10 & 11 6pm
 Everybody loves Jeanne M Feb 10 & 11 8.15pm
 One life PG Feb 17 & 18 6pm
 The Master Gardener M Feb 17 & 18 8.15pm
 Two tickets to Greece M Feb 23 10.30am, 24 & 25 6pm
 Alcarras M Feb 24 & 24, 8.15pm

Tickets \$14 / \$12 / \$8 via trybooking.com
www.swanpoolcinema.com.au



Contribute to Tableland Talk

Our community newsletter relies on community contributions to publish. We are all about sharing and enjoying Tableland stories and activities. Send us your local tall tales and true, photos and sketches, community and business advertisements. We love to hear from community members of all ages. See email below >>>>

Tableland Talk is a community newsletter run by volunteers.

This newsletter is entirely made up of contributions. Contributions to this newsletter are published as a forum for public discussion.

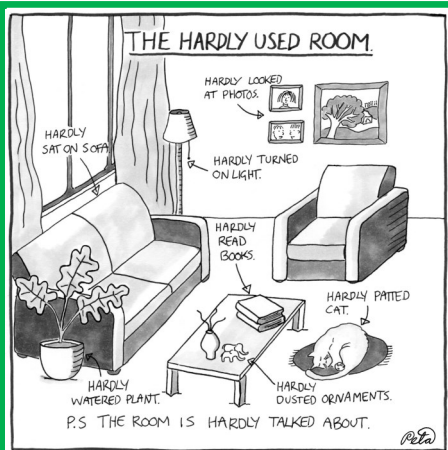
The opinions expressed are the opinions of the contributors and not necessarily the opinions of the TT Team. By publishing contributions this newsletter does not give its authority to the truth or validity of the material contained in contributions.

Readers are reminded that all contributions **MUST** be submitted with the name and address of the writer.

We would appreciate it if all invoices for advertising are paid in full, and promptly - we have to pay to publish.

The TT Team

For information regarding the Violet Town Village Voice or to get an emailed copy each month contact Abbey Ferguson at villagevoice@violettown.org.au online at www.violettown.org.au



Jokes of the Month

Two cows were standing next to each other in a field.

Daisy says to Dolly,

"I was artificially inseminated this morning."

"I don't believe you!" said Dolly.

"It's true, no bull!" exclaimed Dolly

All the storms lately have made me think. Can an atheist claim insurance for an Act of God?

Mobile Library

Dates for Strathbogie:

February 3 and 17
 10.00 - 12 noon

Every 2nd Saturday



Strathbogie Memorial Hall

Available for hire— \$150 with \$250 refundable deposit in case carpet cleaning is required.

Bookings contact person is Mary Wynne
 Ph 0419 592211

Strathbogie Recreation Ground

All bookings are to be made with
 Kim Usher
 5790 5345

The Deadline for the March edition of Tableland Talk is Saturday, February 25, 2024.

e: tablelandtalk@gmail.com, m: 0400 019 607

Preferred formats: Word or Publisher files, font Arial 11, convert pdf to jpeg, images <250k. TT Team.

Continues from page 1

- ☐ move garbage, chemicals, poisons to a high place
- ☐ secure objects that could float and cause damage
- ☐ relocate vehicles and equipment
- ☐ move livestock to higher ground
- ☐ ensure pets are safe and secure
- ☐ check your car and fill it with fuel
- ☐ put sandbags in the toilet bowl and over all laundry/bathroom drain holes to prevent sewage back-flow
- ☐ lay sandbags to protect your property

IF YOU NEED TO EVACUATE

If you leave of your own accord advise Police, SES, family and neighbours

- pack clothing and emergency kit in waterproof bags
- empty freezers and refrigerators leaving doors open (to avoid damage or loss if they float about)
- turn off electricity and gas
- take your mobile phone (and charger)
- check evacuation routes

IF YOU STAY OR ON YOUR RETURN

- stay tuned to local radio/TV
- don't use gas or electrical appliances which have been in flood water until checked for safety
- don't eat food which has been in flood waters
- boil tap water until supplies have been declared safe
- don't allow children to play in, or near, flood waters – they can contain sewage, chemicals and pollution and could wash them away
- do not walk or drive through flood waters. If you must, wear solid shoes and check depth and current with a stick. As little as 20cm of fast flowing water can knock you off your feet.
- stay away from drains, culverts and water over knee-deep
- beware of snakes and spiders which may move to drier areas in your house

SEVERE WIND/ELECTRICAL STORMS

The Tableland can be subjected to strong winds and may experience severe electrical storms, particularly during the summer period.

PREPARING FOR STORMS

- trim trees and branches well clear of your home
- check/secure roofing and clear guttering and downpipes
- clear yard of loose materials that may blow about
- keep a list of emergency numbers and program them into your phone
- prepare an emergency kit of:
 - portable radio, torch and spare batteries
 - first aid kit and manual
 - plastic sheeting, timber strips, hammer and nails, strong plastic bags
- check your home insurance is current and adequate
- check with your local electricity provider for advice on surge protectors and lightning conductors for homes and other buildings

WHAN A STORM APPROACHES

- listen to the local radio for storm warnings
- shelter and secure pets and animals
- if the storm is likely to be accompanied by lightning:
 - disconnect external aerial and power leads to radios and TV sets
 - disconnect computer modems, power leads and other electrical items

Continues on page 5

A AERIAL SERVICES

Drone photos, videos and sales

Sales of DJI drones and spares at competitive prices

High resolution digital farm mapping

Property and real estate photography

Commercials and promotional videos

Asset and roof inspections

Call [0490 805 379](tel:0490805379) or email alastair@ataerial.com

Jackson's Produce Store

Cowslip Street, Violet Town

We are located in the main street of Violet Town and proudly stock our shelves with local produce and products, as well as fresh fruit and vegetables, gourmet cheese, biscuits, yoghurts, organics and superfoods, and lots more.

We also offer "Coomalong Estate" Oil re-fills.

Open Wednesday - Friday 10am to 4pm and
Saturday 10am to 1pm

Mobile: [0418773877](tel:0418773877) Email:

jacksonsvt@gmail.com

Strathbogie Ranges

- Nature View -

Stories, activities & more.

*Ecology, landscape and
natural history*

<https://bit.ly/3sh52K1>



DYLAN KEMP 0467 088 248
DBEKEMP@OUTLOOK.COM



Strathbogie Brewing Company

Dave & Sandy Joyce

See our website for stockists

www.strathbogiebrewing.com.au

Strathbogie Tree

+++++

Strathbogie-Tree is our unofficial Strathbogie Tableland bush telegraph. It is an email list based on Google Groups and covers a fair percentage of the Tableland population and friends (both transient and permanent). Through this, we share the following information and more:

- Lifts / rides / car shares
- Requests for assistance
- Offers of assistance
- Local job advertisements
- Lost / missing animals or people!

- Announcements of social activities / get-togethers
- Fire sightings / road washouts
- Any other thing you might want to contact other Tablelanders about
- Information on your local business or service

+++++

To learn more or join Strathbogie-Tree, please send an email to Stuart on stuartb446@gmail.com or call on 0422 408 915



Very Reasonable Advertising Rates - Advertising solely funds this newsletter. Advertisements for revenue raising or business advertisements are charged per issue at 1/8 page \$7, 1/4 page \$14, 1/2 page \$21, full page \$42. Exact size and placement is at the discretion of the Editor. Free community event advertising is at no cost. For more information e: tablelandtalk@gmail.com or m: 0400 019 607. Please support our advertisers.

Continues from page 3

- draw all curtains and keep clear of windows, electrical appliances, pipes and other metal fixtures (eg don't use the bath, shower, handbasin or laundry/kitchen sinks)
- avoid the use of fixed telephones (in emergencies, make calls brief)
- don't touch any metal, brick or concrete and don't stand bare foot on concrete or tiled floors

WHEN A STORM STRIKES

stay inside, shelter well clear of windows and skylights

continue to monitor the situation on your portable radio (don't use a fixed phone)

if caught outdoors:

- seek a solid enclosed shelter such as a 'hard top' metal bodied vehicle or solid building
- avoid open structures or fabric tents
- never shelter under trees
- if far from shelter, crouch (alone, feet together), preferably in a hollow. Remove steel objects from head/body. Don't lie down flat but avoid being the highest object.
- if your hair stands on end or you hear 'buzzing' from nearby rocks, fences, etc. move immediately. At night a blue glow may show if an object is about to be struck.
- if swimming, leave the water immediately
- don't ride horses, bicycles or travel in open vehicles
- stay away from metal poles, fences, clothes lines, etc.
- don't fly kites or model aeroplanes with control wires
- don't handle fishing rods, umbrellas or golf clubs, etc.
- if driving, slow down and park away from trees, power lines, etc., stay inside metal-bodied (hard top) vehicles or caravans but don't touch any metal sections

AFTER THE STORM PASSES

check for damaged windows, walls or roof. Temporarily cover with plastic sheeting and nailed-on wooden strips

communicate with neighbours

beware of fallen power lines, damaged buildings and trees and flooded watercourses

electrical storms may not always be accompanied by rain – if this is the case, check for any sign of fire and phone 000

LIGHTNING FACTS AND MYTHS

when struck, people do not glow or 'fry to a crisp' but the heart and breathing are often affected.

Only about 30% of people struck actually die and the incidence of long-term disability is low, particularly when appropriate first aid is applied promptly

If your clothes are wet, you are less likely to be seriously injured if struck, as most of the charge will conduct through the wet clothes rather than your body

lightning can, and often does, strike more than once in the same place

FIRST AID IF STRUCK BY LIGHTNING

Check for respiration and pulse, if absent apply immediate heart massage and mouth-to-mouth resuscitation (CPR) to lightning victim until medical help arrives and they will have a good chance of survival. (You won't receive a shock from the victim.)

Check for signs of electrical burns and cover the affected areas. If the person is breathing, cover any burned areas with a sterile gauze bandage, if available, or a clean cloth. Don't use a blanket to or towel as loose fibres can stick to the burn area.

Emergency subcommittee

Strathbogie "Cup Weekend" Festival – Do you want to be involved in 2024?

Following on from the success of the recent event thanks to the amazing Bogie community, a committee is being formed to organise and run next year's festival, which we hope to be bigger and better.

Some things the committee are considering are:

Incorporating more arts and cultural events

Show casing local business and produce with stalls on the Sunday at the Rec Ground

Promoting local accommodation via the web site

So, if you are interested in any of the above, and/or wish to join the Festival Committee, please do reach out to me lisaduggan142@gmail.com

Energy Sub committee

STAG is inviting interested members of the community to help with the establishment of an energy subcommittee.

A meeting will be held mid to early February. We will update on Strathbogie Tree so look out for it. This committee is tasked with working with local, State and Federal members to source funding and design support for the islandability of the Towns and Tablelands. Early investigations show there is already existing Microgrids in Corryong, Omeo, Mallacoota and Yackandandah. So, we don't need to invent the wheel.

After speaking to our local member Annabelle Cleeland, who is in the process of discussions with State government and Ausnet. She is hoping to report back to us in early February. Hopefully we will have her feedback before the meeting.

It was the unanimous opinion of STAG that the community should speak with one united voice. We strongly encourage in the community with an interest in this project to please attend the meeting and become involved through the subcommittee.

Adrian Beard STAG



STRATHBOGIE

**EXCAVATION
& CONCRETE**

CONCRETE SERVICES

SHEDS
DRIVEWAYS
PATHS
CONCRETE STRUCTURES

EXCAVATION SERVICES

FENCE CLEARING
TRENCHING
AUGER DRILLING
DRIVEWAYS
DRAINS & CULVERTS

Mob: 0418 141 950

Refuelling Solutions

24/7 Self Service Diesel

Strathbogie Fuel Cell 62 Spring Creek Rd

For all your On-Farm fuel deliveries and lube supplies please contact

Mark Reynolds

Business Development Executive

Shepparton

M 0418 510 028

E mreynolds@rfs.com.au www.rfs.com.au



Beautiful Bogie Trees: planting for shelter belts, and adding some habitat for wildlife

“Shelter belts” along fence and creek lines provide shade for stock, wind protection for crops and orchard trees and they can also add habitat for some species of wildlife. Some people may not want to plant the more flammable eucalypts, which can also grow very tall. There are a number of mid-storey trees and tall shrubs that grow well on the Tablelands, that provide good alternatives. A bonus is that many of our animals and birds will use these as shelter trees, and to move between patches of native vegetation. My favourite is the Blackwood Wattle (*Acacia melanoxylon*), which is quite long-lived. Koalas love the dense shade provided by Blackwoods in hot weather. Shea-oaks (*Allocasuarina*) and *Banksias* are also a great option, as neither grow too tall. Shea-oaks are also a very attractive tree add to your property. The other great thing about these trees is that they are all evergreens, so they provide shelter for animals right through the whole year, not just in the warmer months.

Photos & text: Kath Handasyde



know that many of you must be seeing some wonderful native trees around the Strathbogies, so why not contribute a photo of your favourites for Tableland Talk? Please send photos, and indicate the locality, plus a short paragraph if you wish, (or contact me and I can write something for you).

Email to: kathstuart60@gmail.com a few days before the last Friday of each month or send directly to the Tableland Talk team at: tablelandtalk@gmail.com

Tableland Artists – Can you help?

The newly formed Strathbogie “Cup Weekend” Festival planning group recently met, and one of the issues we discussed was that last year’s Festival lacked art and cultural content. We are hoping to address this for the 2024 Festival.

The wonderful Bridge to Bridge Sculptural Walk that Bogarts organized in the past was discussed as it was a great event and a big success. Unfortunately, membership of Bogarts has fallen and we have been advised that they don’t have the manpower to organize an event...hence the shout out.

There are many talented and creative people on the Tableland and we were hoping there may be enough interested in putting their hand up to plan an event over the Melbourne Cup Weekend in November. At this stage the planning group is thinking either the Friday evening or the Monday.

Does the above sound like you? If so, we would love to hear from you at strathbogiecupweekendfestival@gmail.com

Strathbogie “Cup Weekend” Festival Planning Group

The Weekend Local

Euroa's gourmet providore stocking produce from the Strathbogie Ranges and surrounds. Relax over a great coffee or tea from Mansfield Coffee Merchant, take away a local bottle of beer, wine or Sassy Sister

berry liqueur made at Merton. Our ever expanding stock reflects the diversity of food produced in our region by passionate and committed people.

Weekdays:

⇒ 10am to 3.30pm

Weekends:

⇒ 9am to 3.30pm

Email:

dayle@theweekendlocal.com.au

Mobile: 0490 842 383



EUROA HORSE PARK

IS PROUD TO ANNOUNCE OUR



'Horses 4 Healing'

**FREE TALKS & DEMO'S
with Q&A's**

SATURDAY, February 3rd

10am-12noon AND 6pm-8pm



**Attention ALL health practitioners, therapists,
horse owners / riders and coaches,
we invite you to learn more about**

**Equine Assisted Learning (EAL),
Equine Assisted Therapy (EAT),
Hippotherapy & Biomechanics**

from

Coach of the Year (Vic. Disability Sport & Recreation) & Equine Facilitated Learning (EFL) practitioner, Sally Francis OAM; physiotherapist & advanced event rider, Kim Slavin and Animal Assisted Learning coach, Vanessa Hawkins.

**Our special guest is Gold Medalist from the
2012 London Paralympics, Joann Formosa OAM PLY.**

PLEASE FOLLOW THE H-EDUCATION CLINIC LINKS ON THE WEBSITE for more information and to register your attendance. www.euroahorsepark.com.au



PRIMARY CARE
CONNECT

**Your Gambler's
Help**



Your local Gambler's Help service agency is Primary Care Connect. We offer free, confidential information, advice, and counselling to anyone affected by gambling.

Phone: (03)58233200

Email: intake@primarycareconnect.com.au

Hours: 9am – 5pm Monday to Friday. After hours services can be arranged.

You can also contact Gambler's Help on 1800 858 858 or go to gamblershelp.com.au 24hrs a day for immediate support.

TQ Top Quality
plumbing services

0407 095 179

Servicing the Strathbogie Shire and Surrounds

"No job too big or too small"

- Qualified Plumber and Gas Fitter
- New homes, renovations and extensions
- Roofing, spouting and down pipes
- Septic tanks, pumps and blocked drains
- Gas heaters and kitchen appliances
- 24 Hour emergency plumbing
- Wood heaters and skylights

Licensed Plumber & Gas Fitter 50447

**CROYDONDALE
CABINETS**

**CABINET MAKERS, KITCHENS,
SHOP FITTINGS
NEW HOMES, RENOVATIONS, REFACES**

Ph: 0408 349 072

Graeme McKenzie, Strathbogie ABN 27 746 178 130

Email: gmc13990@bigpond.net.au



Brianna King

ACA Reg Counsellor #20374

Offering Trauma-Informed Counselling services to individuals & couples Australia-wide via Telehealth (Phone/Zoom)

For more info please see my website:
lightthewaycounselling.com

For enquiries or bookings:
lightthewaycounselling@gmail.com

Phone: 0439 776 040

Find me on Facebook & Instagram for daily content:
Light the Way Counselling.

Based Creek Junction VIC 3669

Upcoming closures for road rehabilitation works

Please be advised sections of Creek Junction Road and Spring Creek Road will be closed from the following dates, weather permitting:

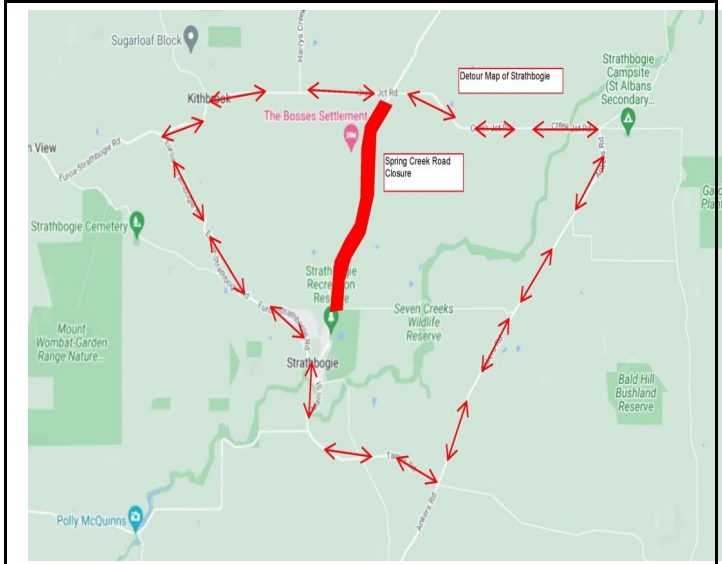
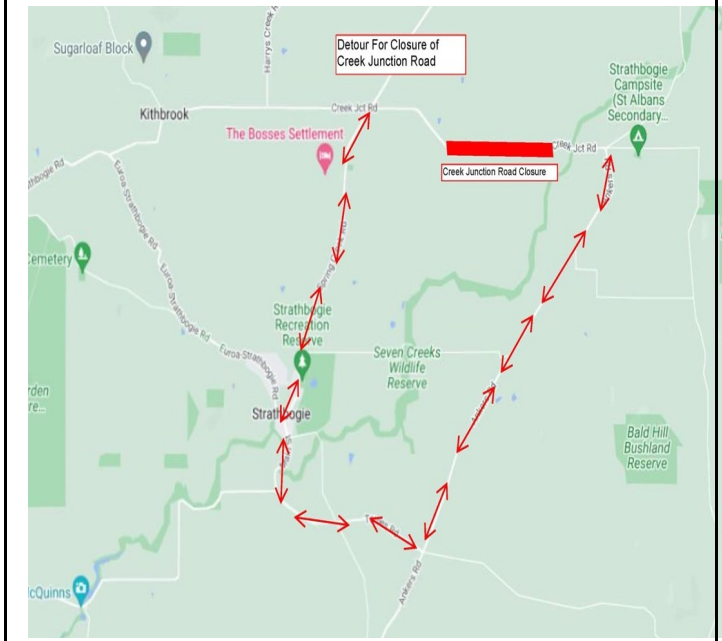
Creek Junction Rd works commencing January 22, 2024.

Spring Creek Rd works commencing February 2, 2024.

Please be aware of the changed conditions and follow the signs in place for detours.

Works are expected to be completed by mid-February, weather permitting.

For further information or inquiries, please contact Council's Projects Team on 1800 065 993.



The STAG Report (January 21 2024 meeting)

STAG held their meeting at the beautiful Boho South Hall.

Items discussed.

Fran Kearney is the new golf representative on STAG committee.

LEAP (Local Emergency Action Plan) program is underway with the first formal meeting to be held on 1st Feb at the Strathbogie Hall

STAG contacted the Shire about the ongoing saga about repairing Harry's Creek Road. The Shire gave an estimated completion date of early 2024.

STAG have finalised the action plan points. This will be sent to Jean McKinnon at the Shire, who will complete it and make it available to all Tableland residents as soon as it is done.

Because of the continuous disruptions to our power supply, STAG is setting up an Energy subcommittee, to investigate and source

alternatives to help our community become more self-sustaining in the event of power disruptions. The Shire wants to amend the operating procedure and management of the generator at the Strathbogie recreation ground, which the members of STAG do not agree with. Further discussion on this is necessary.

The Australia Day Committee held a Community BBQ/picnic at the Rec. reserve on 26th January for people to come and rest, eat, chat.

Recycle bins are a terrible eyesore to our recreation reserve. There is a continual problem with sorting, landfill rubbish being put into bins and litter all around the area. Please use the recycle bins correctly and show you care about our environment.

Wildlife signage is a high priority for our area and we will be pursuing the Shire to erect appropriate signage.

Pennie Beard

Pitch My Project is back in 2024

Calling on Strathbogie Shire residents to pitch their ideas for the 2024/25 Budget. Strathbogie Shire residents – it's time to pitch your idea! Strathbogie Shire Council's annual Pitch my Project initiative is now open for ideas to include in the 2024/25 Budget. Since we launched the Pitch my Project initiative, we're proud to have funded almost 30 incredible ideas from our community. As part of our commitment to continually improving our engagement, we'll put the final decision making into the hands of the community through a participatory budgeting exercise. We want our community to be involved in every step of the development of our 2024/25 Budget. This means we're making sure we fund the projects and initiatives that matter to our residents. Pitch ideas must be Council-led and delivered with no direct allocation of funds given to community groups, clubs, organisations or commercial business. Council has proposed an allocation of \$300,000 for Pitch My Project as part of the 2024/25 annual budget. Each of the six Strategic Focus Areas within the Council Plan will be allocated \$50,000. This year we've also include the opportunity to pitch infrastructure projects. Pitches for infrastructure upgrades that demonstrate strong community benefit can be made through strategic focus areas five and six. We've also released guidelines which include a clear assessment process, and the successful applications will be put to the community to decide which make it into the 2024/25 Budget. "By putting the decision into the hands of our community we are showing our commitment to truly meaningful community involvement," Strathbogie Shire Council Administrator Peter Stephenson said. When it's time to vote we'll put all eligible projects on our engagement platform www.share.strathbogie.vic.gov.au, or you can head to our survey stations throughout the Shire. But first, it's time to pitch your ideas. Head to www.share.strathbogie.vic.gov.au to read the guidelines, find inspiration of past successful pitches and get pitching. OFFICIAL You'll first be asked to contact a Council officer who will advise you about your pitch. There will also be an opportunity to attend an online information session on Tuesday January 30, 2024. The pitch period will close at 5pm on Friday, February 23, 2024.

Tara Whitsed, Communications and Engagement Advisor L: 5795 0065



Strathbogie Shire Power Outages

As you are no doubt aware, the Strathbogie Shire has suffered a number of lengthy power outages in recent weeks with virtually every district affected with outages on Wednesday 13 December, and some continued into Thursday 14 December.

Many would also be aware that Strathbogie Shire Councils number one advocacy goal is the improvement of our power supply which has been fragile for many years.

This fragility impacts on every home and business in our Shire and is detrimental to both residential and commercial investment.

In order to provide state and federal government details of the impact these outages have on our community, we would like to hear first-hand how this issue impacts your business and your family. This will enable us to better inform both levels of government on the serious economic and social effects of these repeated outages and pursue a solution to this serious ongoing problem.

We urge you to take the time to provide us with details of how your business was affected, the impact on your staff, customers and family.

This identities of those providing this information will remain confidential and will be used as part of a further advocacy campaign which hopefully will lead to a permanent resolution.

Can you please forward this information to Steve Cooper, Economic Development and Projects Coordinator at steve.cooper@strathbogie.vic.gov.au



Kelvin View State School Alive and Kicking



Despite closing some years ago, the beautiful school building is still a major focus each Christmas, with Nev and Betty Broughton and their small but incredibly dedicated and hard-working team hosting the annual Kelvin View Christmas Party.



If you haven't attended before, you might like to check it out next year as it's always a great night with 2023 being no exception. There's something heartwarming about seeing the school grounds and play equipment being clamored over again by local kids, not to mention the blackboard.

Whilst this amazing little piece of history is reason enough to attend, there's always lots more going on at the annual party, with sensational food, live music and activities for the kids. Of course, Santa makes a visit on the fire truck which is to the great delight of many.



Sit back and enjoy the kids accompanying Di Mackrell in singing Carols for Santa whilst they eagerly await their name to be called out.

All funds raised for the diner and various raffles provided much needed funds to keep the school maintained.

Hope to see you there next year!



Lisa Duggan



**Now open in Strathbogie - Ted Paterson's Mechanical
Servicing and Repairs.**



**Need a small engine repaired, a mower fixed, a chainsaw sharpened, trailer lights
reliant, basic car servicing or brake work? With years of previous experience delivering mechanical
repairs to the Strathbogie community - I'm back and I'm your man!**

Give me a call or drop me a line. If I can't talk, I'll respond ASAP.
(I'm still working in Euroa a couple of days a week).



Mob: 0438 017 361 E: alexvic64@gmail.com



SOLAR PUMPS FOR AUSTRALIAN FARMERS

- Full DC Solar Pump Packages starting from \$1980
- DC Submersible and Surface Mount Pumps
- Hybrid Solar Pumps - AC/DC
- Lifetime Support from Commodore Australia



**VISIT OUR WEBSITE TO SEE OUR
COMPLETE RANGE OF SOLAR SOLUTIONS.**



COMMODORE
INDEPENDENT ENERGY SYSTEMS

**COMMODORE
AUSTRALIA**

P 1300 669 256

sales@commodoreaustralia.com.au
www.commodoreaustralia.com.au

Strathbogie IT

New business to the area relocated from QLD.

Sales, Service & Support for all your hardware &
software requirements.

Microsoft Certified, Insured.

35 years of experience

Call Simon on 0428-327-203

E: simon@strathbogieit.com.au

www.strathbogieit.com.au



STRATHBOGIE GENERAL STORE

Open 7 days a week

Your local general store, café and post
office. Fully licensed.

Yummy breakfasts and lunches, Friday
night Fish and Chips.

Local honey, wines and beer.

Local handcrafts.

Phone 0473 211 400



Strathbogie  Dental
FAMILY DENTAL CARE

**NOW
OPEN**

**Dr Thomas
Hudson**
Stacey Putker
(Children's Dental)

(03) 4702 2111

36 Kennedy St Euroa
At Euroa Health

Getting To Know You.....

Name? – Lisa Duggan

Where were you Born? – Kew, Melbourne

Siblings? – 1 younger brother deceased

Hobbies/Sports whilst growing up? – Swimming, Horse Riding – Eventing, Showing, Novelty Racing

Current hobbies? Gardening, “playing” with the horses and new to tennis

Name the places you have lived? – Donvale, Warrandyte Sth, Wonga Park, Gooram, Kelvin View

Food Fan or Food for Fuel? – Absolute food fan

Jobs you have held? – Coles Bakery, Admin in Accountants, Produce Store Owner, Casino Croupier, Financial Planner

Favourite genre of music? – Tie between 1970's folk and Country (Think Willie)

Dancer or non-dancer? - Dancer

Anything on your Bucket List you haven't ticked off? - Africa

Favourite animal? Tough one, can't choose between horses and dogs

Community Groups you are involved with? – Strathbogie Tableland History Group, Strathbogie “Cup Weekend” Festival

Favourite holiday destination? Anywhere with warmth and water

When you were a child, what did you want to be when you “Grew up?” Strapper, lawyer and first Female Prime Minister

Nickname/s? – None until recently thanks to Fiona Townsend.....Vesty

Lisa Duggan has suggested a regular “Getting to know you” feature in Tableland Talk and volunteered to kick things off. If you would like to tell the community a bit more about yourself or interview someone from the Tableland you find interesting please get in touch. (Sean Ed.)

Recipe of the Month

Apple Puffs

Ingredients

1 cup SR flour
1 tbspn softened butter
1 lightly beaten egg
Milk
3 Granny Smith apples peeled and quartered
1 cup sugar
2 cups water
2 tbspn butter

Method

Preheat oven to 180 degrees
Rub the butter into the flour. Add the egg and enough milk to make a firm dough. Roll out and cut into squares around the apple quarters. Place in a greased dish. Combine the sugar, water and butter and pour over the apples. Bake for 20 minutes.



Ref: Delish, our family favourites. Peranbin Primary School 2012

What's worth reading on www.strathbogie.org?

Find out about our Tableland CFA services on their page here: https://strathbogie.org/?page_id=100

- Useful information is provided
- Local Brigades are listed
- There is an excellent list of FAQs
- There is a handy list for “Who should I contact?”

Communications Subcommittee

We're here for you

Monday:	9:30am - 4:30pm*
Tuesday:	9:00am - 12:00pm
Wednesday:	9:30am - 4:30pm*
Thursday:	9:30am - 4:30pm*
Friday:	9:00am - 12:00pm

(* Closed for lunch 12:30pm - 1:30pm)

36 Binney St, Euroa
5795 1771

gmcu Euroa is a part of the Benalla-Strathbogie team.

• Benalla • Euroa • Violet Town •

If you need assistance outside these hours,
please call the Benalla branch.
9am - 5pm Monday to Friday.
03 5762 3380 - gmcu.com.au

gmcu.

Goulburn Murray Credit Union Co-operative Limited ABN 87 087 661 509 AFSL/Australian Credit Licence No. 241364. Terms & conditions, fees & charges and eligibility criteria may apply.

GRANITE BRIDGE AGRICULTURAL ENTERPRISES



Rural Contracting Tractor, Fencing & Chainsaw Work

Tractor Work Using Deutz Fahr 96hp Tractor:

- ◊ Flail Mowing with 2.4m (8ft) cutting width
- ◊ Front End Loader Work - Bucket, Heavy Stick Rake, Pallet Forks
- ◊ Hay handling with front and rear forks
- ◊ Post Hole Digging - 6" to 24" diameter augers
- ◊ Harrowing with 4m (13ft) harrows
- ◊ Grading with 1.8m (6ft) grader blade
- ◊ Light Plowing / Scarification with 3.2m S-Tine Cultivator
- ◊ Pulling, Pushing and Towing - 4wd and 4 wheel diff locks can pull whole trees!



Fencing, Chainsaw & General Work:

- ◊ New Fence Erections
 - timber, steel or concrete posts, wire or wire/hinge joint fences
- ◊ Fence Repair and Clearing Trees Off Fences
- ◊ Chainsaw Work and other tasks around the farm



Now
offering Deep
Ripping, Pipelaying
(via ripper), and
Fertiliser Spreading!

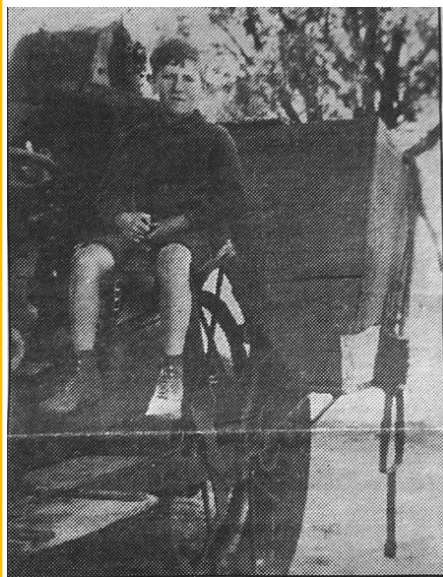
Jobs requiring two
men charged with
additional
\$55/hour

RATES: Tractor Work: \$77 per hour incl. GST (\$70 + GST)
Other Work: \$55 per hour incl. GST (\$50 + GST)

- Rates include fuel & oil - transit time charged - materials and other consumables extra -

Call Big Clarky on 0406 074 019 or Julie on 5790 5226 to discuss!

Taming the Wilds of Strathbogie part two continues from our December edition



Laurie Tame, in younger years, poses at the helm of a grain harvester.

Later, in the 1920s, cars began to arrive in the district. The first that Laurie can remember in Strathbogie was the forerunner of the Willy's Jeep, and the first car in which, as a young boy, he was invited to ride. His father did not own a car until some years afterwards, when he bought a Chevrolet Tourer. This vehicle was equipped with a powerful spotlight and had celluloid side windows set in a canvas framework. The driver's window had a flap to allow for hand signals as there were no indicators.

"Dad collected the car from garage owner Ted Agar at 44 Binney Street (where Robin Young's upholstery business is now)" says Laurie.

"Ted reckoned that after a couple of driving lessons dad knew enough to take the car home but, half way up the hill, it began to smoke. He thought there must be something wrong with the motor until he discovered he had not taken the handbrake off! (The car only had external rear brakes.)"

When the time came for Laurie to begin his schooling his mother helped him with lessons by correspondence from Carlton until, at the age of eight, he began attending the Strathbogie Primary School. Laurie spent grades 4 to 8 at the school, where there were 34 students in 8 grades with 1 teacher. All the work was done in pen and ink from blackboard lessons. At that time the school was on the east side of the township, and it was a 5 and ½ half mile ride by bicycle. His sister rode a Shetland pony. The school was moved to its present site after the 2nd World War.

Before and after school there were chores to be done including helping with the milking, separating the milk, and feeding the skim milk to the calves. Laurie said that the money gained by selling the cream paid for the family's food and clothing, while any other income paid off the farm debts. Some of their income was derived from a party line switchboard operated by his mother, which was one of about half a dozen similar exchanges that were part of the telephone network serving the farms of the Tableland.

The land was gradually improved for grazing by the removal of timber and the introduction of chemical fertilisation and sub clover sowing in the late 1920's. Machinery continued to be developed, and sheep became more profitable, easing out the cattle. Wool prices fluctuated greatly, peaking in 1952. Wool, at an average of "a £1 a lb"(one monetary pound for one pound weight), and continued to be a viable product until the later part of the twentieth century. In recent years it has become necessary to explore diversification, and many farms are exploring orchards or vineyards for alternative crops.

"Strathbogie's future is in its opportunities for diversification," Laurie says.

"Trees are now being replanted to compensate for the early settlers not having realised the consequences of indiscriminate land clearing, and we are much more aware of the ecological effects of our actions. Many of the farms are being bought by people from outside the district, who are bringing with them fresh ideas and becoming valuable members of the local community."

In 1950 Laurie met his future wife Lyla Kunsey, during a trip to the city to see the Melbourne Show. Lyla was a city girl, a workmate of Laurie's aunt, and it was a big change for her to move to the comparative isolation of Strathbogie after they were married in 1953, although she would not like to return to the city life now. The couple built their present house on the farm, and like his father before him, Laurie has now handed over the running of his farm to their youngest son. Eric Tame is the present owner and lives in the renovated old house with his wife Dayle and their two children.

Dayle Tame

Quiz question of the month

Question: Where and when was the link up of the Melbourne to Adelaide railway made?



Do You Have an Interest in Gardening?



Strathbogie Garden Group is an informal group of (mostly) Strathbogie residents who share a love of gardening, good food and social interaction. We get together on the first Wednesday of the month, usually visiting a local garden of one of our members.

Our meetings start with a tour of the garden followed by afternoon tea upholding traditional country hospitality.

We share produce from our gardens, cuttings, seeds and potted plants, gardening journals and magazines.

Last year we visited some absolute garden gems – old established gardens with beautiful mature trees, glorious rhododendrons and azaleas in full bloom, native gardens, newly established gardens ... all different and inspiring.

Our final get together for the year was a Christmas lunch enjoyed alfresco in perfect weather.

Whilst there is a wealth of gardening knowledge and experience in our group there is always something to learn, new plants to discover and a visit to other gardens is one of the best ways to get ideas for our own gardens.

New members are most welcome to join our Group whether you're an experienced gardener or an absolute beginner new to the challenges of gardening on the Tableland.

Interested in joining? Contact me for more information.

Kay Righetti

Co-ordinator – Strathbogie Garden Group

0418 171 439 kayr@macsfield.com.au



Starts
10 Feb

9 different
permaculture
site visits

MURRNONG PERMACULTURE DESIGN COURSE

Learn outdoors, in person, on site.
Demonstrations and hands on activities. Based
at Murrnong, active permaculture property with
27 years of development.

STARTS FEBRUARY 10, 2024
EVERY 3RD WEEKEND
TO JUNE 16 2024

David
Holmgren
guest
tutor

MURRNONG.COM



Walk of the Month

Seven Creeks Apex Walk: <https://walkingmaps.com.au/walk/4530>



Address: Seven Creeks Park, corner of Bury St and Kirkland Ave, Euroa 3666
2 hours, 6.8km, easy

“Euroa” may come from a Ngurelban language word ‘Year-o’ meaning ‘joyful’. It makes sense. Seven Creeks Walking Track was built as an Apex bicentennial project in 1988. Strathbogie Shire, Apex and Friends of the Sevens continue that good work. Volunteers are principal contributors to the active management of the reserve. They provide revegetation with indigenous plant species to increase habitat values and stabilise soil; they remove invasive exotic plants and rubbish. They also run education activities such as guided tours, information sessions and spotlight walks.



Choose to start the walk anywhere along Seven Creeks. Parking is readily available. A good central starting point is Seven Creeks Weir on Kirkland Ave opposite Bury St. Track markers point to a 4km southern loop, a 3km northern loop or a full walk of 7km. Join the Saturday morning communal ParkRun from this location. On your return, the park is a great place to refresh.

The weir created a perfect swimming hole. Until the 1970’s it was the main town swimming area, complete with pavilion, change rooms, diving boards and learner pools. At the weir wall, note a fish ladder and information board.

The reserve has 2 vegetation types. Floodplain Riparian Woodland and Plains Grassy Woodland. The dominant trees are River Red Gum, providing hollows and canopy for habitat. Silver Wattle and Blackwood provide nectar when in flower. Ground cover of grasses, herbs, branches, twigs and leaves are home to many creatures. The variety of habitats attract a range of fauna, such as microbats, possums, gliders, koalas, echidnas, snakes, blue tongued lizards, geckos and skinks. Regular bird surveys have been conducted recording over 90 different species.

Fluctuating water levels and flows can change the creek bed; billabongs form and sedimentary deposits create sand bars and sand slugs. The creek supports habitat for aquatic species such as native and exotic fish, rakali, platypus, and frogs.

The majority of the sporting facilities utilised by the Euroa community are shared with the track reserve. Walking creekside under the shade of magnificent red gums and beside thriving native understory revegetation, you will pass impressive football, netball, tennis and bowls facilities.

Following Hume and Hovell (1824) and Thomas Mitchell (1837), squatters arrived (1838) to take up runs. Euroa grew on the sheep’s back. The rest is history. Stay a while to experience it. Take the Heritage Trail to learn about the many historic buildings built at the height of Queen Victoria’s reign, visit the Victoria Cross Memorial Park and the Museum.

There is more to do! Explore Euroa Arboretum, spend a week exploring the region’s many tracks and trails, take a self-drive or riding tour. On the third Saturday of the month visit the Farmer’s Market.

BBQs, sheltered and open picnic facilities available.

Surface: asphalt, dirt or gravel. Dogs: must be on-leash and under control.

Sean Mathews

Australia Day



On Friday 26th January the Australia Day Group held a Community BBQ at the Strathbogie Recreation Reserve.

The weather was glorious and the company fantastic. Lots of locals, both new and not so new came along to participate in a gathering of friendship, sharing, caring and fun, which is the wonderful Aussie spirit.

A rough estimate of about 60 people came and went throughout the day.

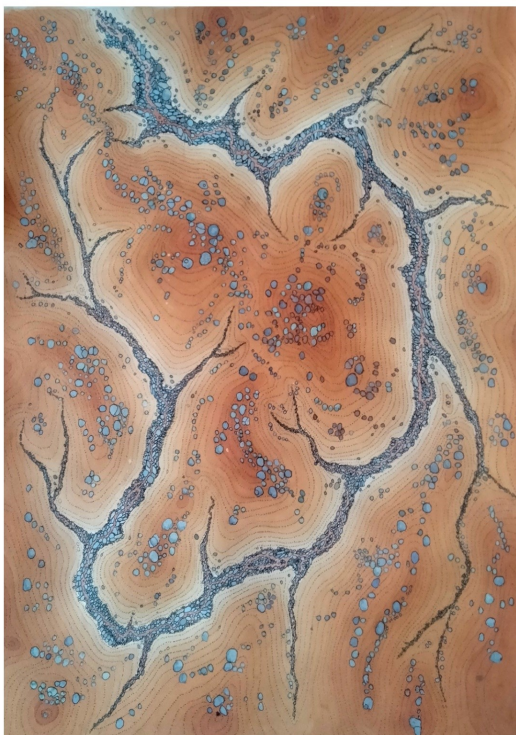
The highlight of the day was our guest, Annabelle Cleeland who was very generous with her time to come up to our little tablelands. She

enabled all those who wished, to express their concerns, frustrations, and ideas about our power outages. Her assistant Jarrar was also there to chat and inform.

We are very thankful to all those very generous locals, who gave donations to enable us to fund this important event.

Thankyou everyone who gave their time setting up, cooking, cleaning and supporting.

Pennie Beard, Mark Tame



ELEVEN STORIES

**AN EXHIBITION OF MUD
MAPS, POSSIBLE
LANDSCAPES, AND TALL
STORIES**

BY SIMEON AYRES

**BUSH GATHERINGS GALLERY
208 HIGH STREET, VIOLET TOWN
OPENING FRIDAY 2ND FEBRUARY
6PM**

**AND SATURDAYS AND SUNDAYS
IN FEBRUARY AND MARCH 10AM
TO 2PM**

**OR BY APPOINTMENT
0455246141/0417166824**